

Teachers requested both a desk and a kidney table in the classroom. Both do not fit. Which should be provided? Or are students' desks to be eliminated to provide room for both a teacher's desk and a kidney table?

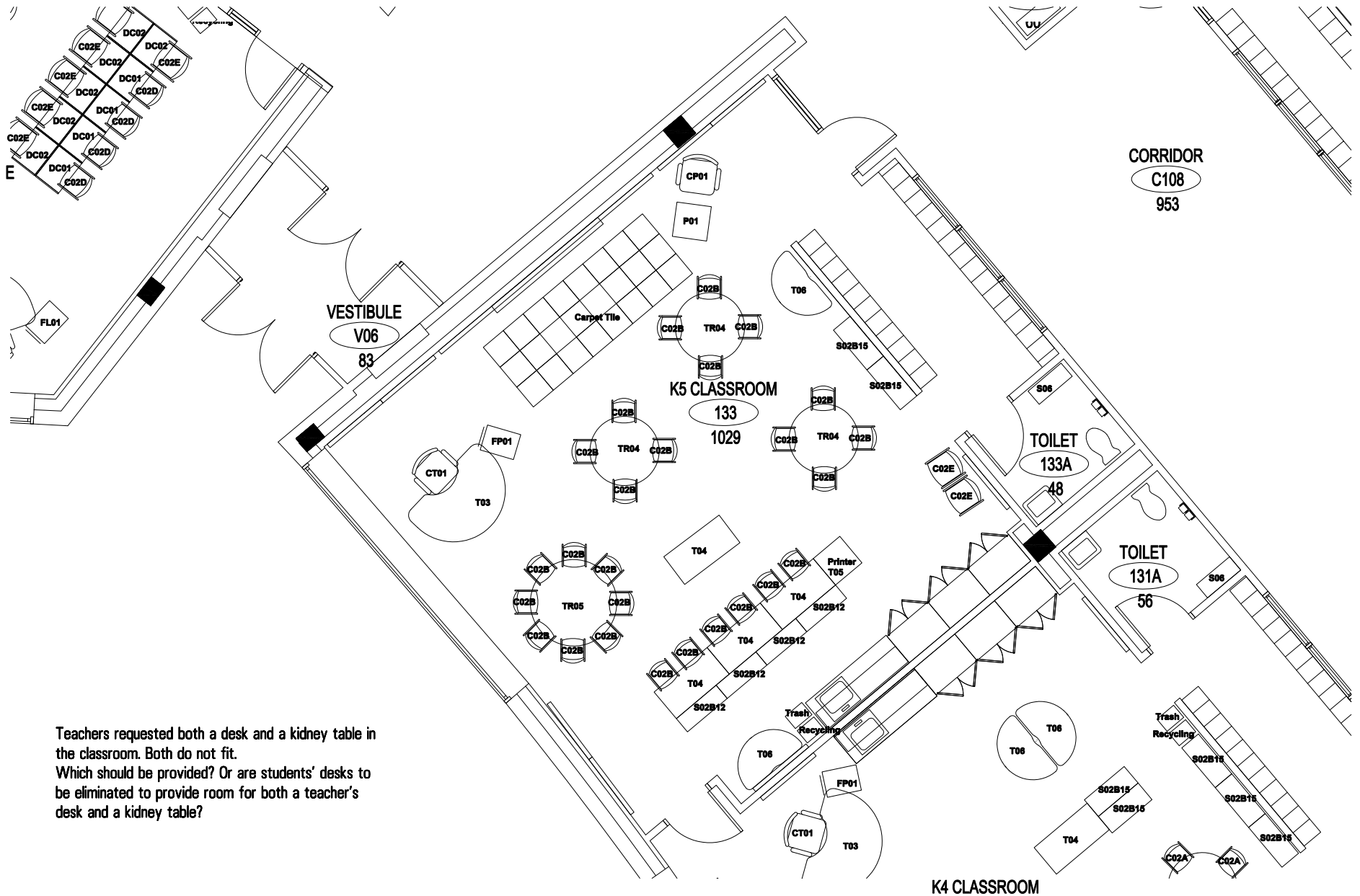


Indian Community School

FFE Inventory

16-Feb-07

FLOOR	AREA	ROOM NAME	ROOM NUMBER	ROOM USE	CONCEPT/S YMBOL	ITEM NAME	CODE	ITEM DESCRIPTION	ITEM QUANTITY	STANDARD OR NONSTANDARD	NOTES
1	B	K4 Classroom	131	Classroom	Maple	kidney table w/ casters	T03		1		
1	B	K4 Classroom	131	Classroom	Maple	mobile pedestal file	FP01		1		
1	B	K4 Classroom	131	Classroom	Maple	computer tables	T04	adjustable height	3		
1	B	K4 Classroom	131	Classroom	Maple	middle school student/adult chair	C02E		2		
1	B	K4 Classroom	131	Classroom	Maple	printer table	T05		1		
1	B	K4 Classroom	131	Classroom	Maple	half round table, 36" dia.	T06		2		
1	B	K4 Classroom	131	Classroom	Maple	student chair	C02A		10		
1	B	K4 Classroom	131	Classroom	Maple	student chair	C02B		16		
1	B	K4 Classroom	131	Classroom	Maple	SMART Board podium	P01		1		
1	B	K4 Classroom	131	Classroom	Maple	podium stool	CP01		1		
1	B	K4 Classroom	131	Classroom	Maple	bathroom cabinet	S06		1		
1	B	K4 Classroom	131	Classroom	Maple	4'-0" wide rectangular table	T07		1		
1	B	K4 Classroom	131	Classroom	Maple	48" round tables	TR04C		3		
1	B	K4 Classroom	131	Classroom	Maple	adult task chair	CT01		1		
1	B	K4 Classroom	131	Classroom	Maple	shelves for books and bins	S02B15	with casters	5		
1	B	K4 Classroom	131	Classroom	Maple	trash receptacle	Trash		1		
1	B	K4 Classroom	131	Classroom	Maple	recycling receptacle	Recycling		1		
1	B	K4 Classroom	131	Classroom	Maple	FLOR carpet tiles			24		



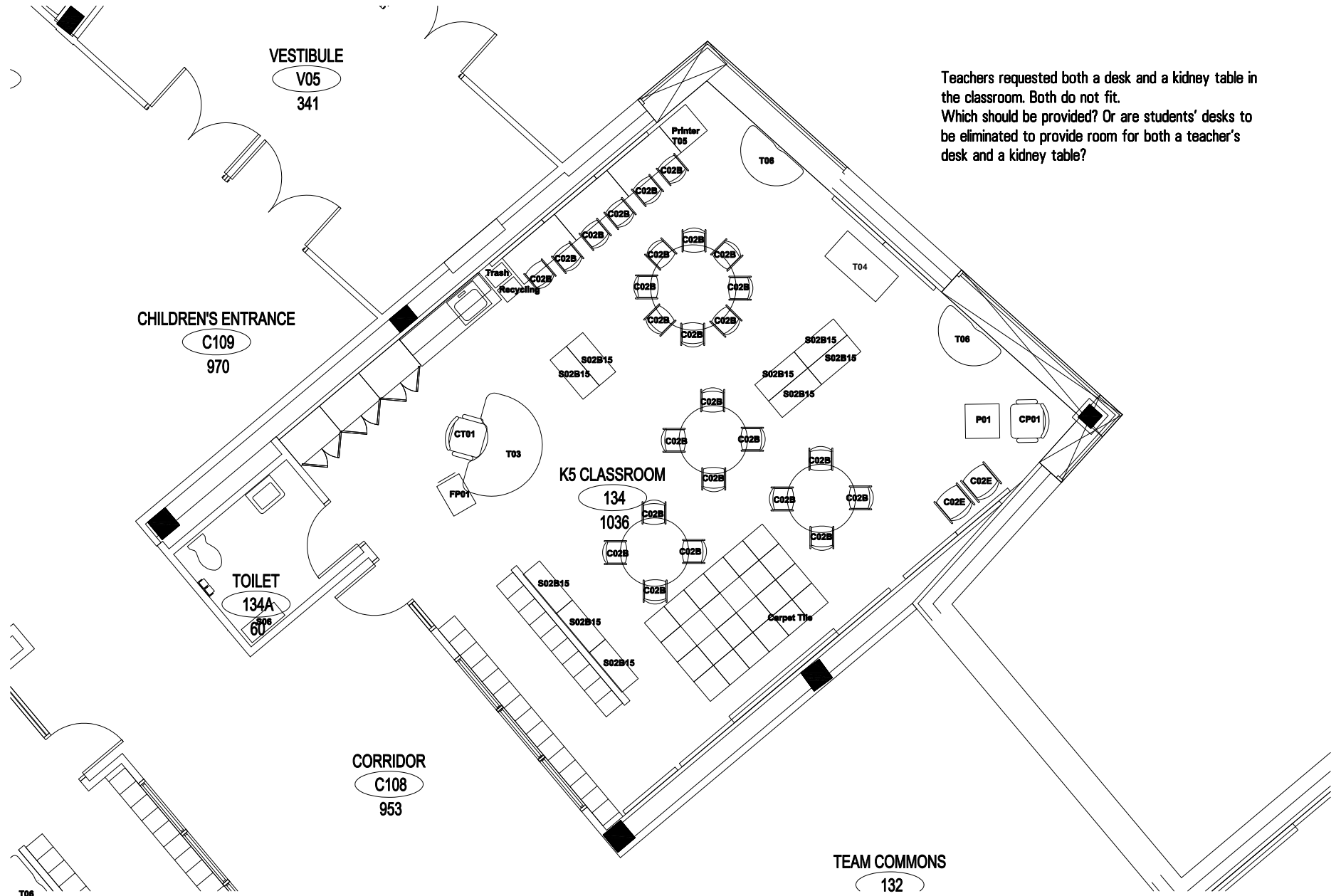
Teachers requested both a desk and a kidney table in the classroom. Both do not fit. Which should be provided? Or are students' desks to be eliminated to provide room for both a teacher's desk and a kidney table?

Indian Community School

FFE Inventory

16-Feb-07

FLOOR	AREA	ROOM NAME	ROOM NUMBER	ROOM USE	CONCEPT/S YMBOL	ITEM NAME	CODE	ITEM DESCRIPTION	ITEM QUANTITY	STANDARD OR NONSTANDARD	NOTES
1	B	K5 Classroom	133	Classroom	Birch	kidney table w/ casters	T03		1		
1	B	K5 Classroom	133	Classroom	Birch	mobile pedestal file	FP01		1		
1	B	K5 Classroom	133	Classroom	Birch	computer tables	T04	adjustable height	3		
1	B	K5 Classroom	133	Classroom	Birch	middle school student/adult chair	C02E		2		
1	B	K5 Classroom	133	Classroom	Birch	printer table	T05		1		
1	B	K5 Classroom	133	Classroom	Birch	SMART Board podium	P01		1		
1	B	K5 Classroom	133	Classroom	Birch	half round table, 36" dia.	T06		2		
1	B	K5 Classroom	133	Classroom	Birch	bathroom cabinet	S06		1		
1	B	K5 Classroom	133	Classroom	Birch	student chair	C02B		26		
1	B	K5 Classroom	133	Classroom	Birch	4'-0" wide rectangular table	T07		1		
1	B	K5 Classroom	133	Classroom	Birch	48" round tables	TR04C		2		
1	B	K5 Classroom	133	Classroom	Birch	adult task chair	CT01		1		
1	B	K5 Classroom	133	Classroom	Birch	shelves for books and bins	S02B15	with casters	2		
1	B	K5 Classroom	133	Classroom	Birch	shelves for books and bins	S02B12	with casters	4		
1	B	K5 Classroom	133	Classroom	Birch	trash receptacle	Trash		1		
1	B	K5 Classroom	133	Classroom	Birch	recycling receptacle	Recycling		1		
1	B	K5 Classroom	133	Classroom	Birch	FLOR carpet tiles			24		



Teachers requested both a desk and a kidney table in the classroom. Both do not fit. Which should be provided? Or are students' desks to be eliminated to provide room for both a teacher's desk and a kidney table?



Indian Community School

FFE Inventory

16-Feb-07

FLOOR	AREA	ROOM NAME	ROOM NUMBER	ROOM USE	CONCEPT/S YMBOL	ITEM NAME	CODE	ITEM DESCRIPTION	ITEM QUANTITY	STANDARD OR NONSTANDARD	NOTES
1	B	K5 Classroom	134	Classroom	Cedar	kidney table w/ casters	T03		1		
1	B	K5 Classroom	134	Classroom	Cedar	mobile pedestal file	FP01		1		
1	B	K5 Classroom	134	Classroom	Cedar	half round table, 36" dia.	T06		2		
1	B	K5 Classroom	134	Classroom	Cedar	computer tables	T04	adjustable height	3		
1	B	K5 Classroom	134	Classroom	Cedar	middle school student/adult chair	C02E		2		
1	B	K5 Classroom	134	Classroom	Cedar	printer table	T05		1		
1	B	K5 Classroom	134	Classroom	Cedar	student chair	C02B		26		
1	B	K5 Classroom	134	Classroom	Cedar	SMART Board podium	P01		1		
1	B	K5 Classroom	134	Classroom	Cedar	4'-0" wide rectangular table	T07		1		
1	B	K5 Classroom	134	Classroom	Cedar	48" round tables	TR04C		3		
1	B	K5 Classroom	134	Classroom	Cedar	adult task chair	CT01		1		
1	B	K5 Classroom	134	Classroom	Cedar	bathroom cabinet	S06		1		
1	B	K5 Classroom	134	Classroom	Cedar	shelves for books and bins	S02B15	with casters	8		
1	B	K5 Classroom	134	Classroom	Cedar	trash receptacle	Trash		1		
1	B	K5 Classroom	134	Classroom	Cedar	recycling receptacle	Recycling		1		
1	B	K5 Classroom	134	Classroom	Cedar	FLOR carpet tiles			24		



Power for teacher's desk is on this wall, but this location does not give her the best sightlines. The desk's location shown in this space plan is best to separate the variety of functions in this room and has a better adjacency to the main door where the students enter.

Program requires carrels for 20 students, but only 15 accommodated.

Indian Community School

FFE Inventory

16-Feb-07

FLOOR	AREA	ROOM NAME	ROOM NUMBER	ROOM USE	CONCEPT/S YMBOL	ITEM NAME	CODE	ITEM DESCRIPTION	ITEM QUANTITY	STANDARD OR NONSTANDARD	NOTES
1	B	Open Office	135	Office	NA	8x8 workstation w/ worksurface for pri	WK135	(2) pedestal files w/ gur	1		
1	B	Open Office	135	Office	NA	adult task chair	CT01		1		
1	B	Open Office	135	Office	NA	guest chair	CG01		1		
1	B	Open Office	135	Office	NA	shelves for books and bins	S05D24		2		
1	B	Open Office	135	Office	NA	lockable storage unit	SU01	"perfect attendance" st	1		
1	B	Open Office	135	Office	NA	trash receptacle	Trash		1		
1	B	Open Office	135	Office	NA	recycling receptacle	Recycling		1		
1	B	Open Office	135	Office	NA	lockable storage unit	SU01	emergency storage	1		
1	B	Office	135A	Office	NA	workwall with oval table	OFF135A	credenza w/2-high later	1		
1	B	Office	135A	Office	NA	adult task chair	CT01		1		
1	B	Office	135A	Office	NA	lounge chair	CL01		4		
1	B	Office	135A	Office	NA	guest chair	CG01		6		
1	B	Office	135A	Office	NA	lateral file	FL02B		4		
1	B	Office	135A	Office	NA	open bookshelf	S02B18		2		
1	B	Office	135A	Office	NA	open bookshelf	S02E18		1		
1	B	Responsible Thinking	135C	Classroom	NA	kidney table w/ casters	T03		1		
1	B	Responsible Thinking	135C	Classroom	NA	adult task chair	CT01		1		
1	B	Responsible Thinking	135C	Classroom	NA	shelves for books and bins	S04B15		6		
1	B	Responsible Thinking	135C	Classroom	NA	mobile pedestal file	FP01		1		
1	B	Responsible Thinking	135C	Classroom	NA	4'-0" wide rectangular table for mediati	T07		1		
1	B	Responsible Thinking	135C	Classroom	NA	younger child study carrel w/ sturdy div	DC02		4		
1	B	Responsible Thinking	135C	Classroom	NA	older child study carrel w/ sturdy divide	DC01		12		
1	B	Responsible Thinking	135C	Classroom	NA	mobile screen	MS01		4		
1	B	Responsible Thinking	135C	Classroom	NA	Fatboy Island	BB01		1		
1	B	Responsible Thinking	135C	Classroom	NA	Fatboy Point	BB02		3		
1	B	Responsible Thinking	135C	Classroom	NA	FLOR carpet tiles			24		
1	B	Responsible Thinking	135C	Classroom	NA	trash receptacle	Trash		1		
1	B	Responsible Thinking	135C	Classroom	NA	recycling receptacle	Recycling		1		
1	B	Responsible Thinking	135C	Classroom	NA	coat hooks on wall					
1	B	Office	135B	Office	NA	workwall with oval table	OFF135B		1		
1	B	Office	135B	Office	NA	adult task chair	CT01		1		
1	B	Office	135B	Office	NA	guest chair	CG01		2		
1	B	Office	135B	Office	NA	undercounter refrigerator			1		
1	B	Office	135B	Office	NA	microwave			1		
1	B	Office	135G	Office	NA	storage unit with lockable doors	SU01		1		
1	B	Office	135G	Office	NA	L-shaped desk	OFF135G		1		
1	B	Office	135G	Office	NA	adult task chair	CT01		1		
1	B	Office	135G	Office	NA	48" round tables	TR04A		1		
1	B	Office	135G	Office	NA	student chair	C02B		4		
1	B	Interview	135H	Conference	NA	5'-0" diameter round tables	TR05		1		
1	B	Interview	135H	Conference	NA	sideboard w/ storage	SB135H		1		
1	B	Interview	135H			trash receptacle	Trash		1		
1	B	Interview	135H			recycling receptacle	Recycling		1		
1	B	Interview	135H	Conference	NA	adult task chair	CT01		5		
1	B	Interview	135J	Conference	NA	adult task chair	CT01		2		
1	B	Interview	135J	Conference	NA	worksurface	T19	8'0" w x 24" D	1		
1	B	Interview	135J	Conference	NA	lateral file	LF05B		1		
1	B	Office	135L	Office	NA	workwall with oval table	OFF135L		1		
1	B	Office	135L	Office	NA	storage unit with lockable doors	SU01		1		

Indian Community School

FFE Inventory

16-Feb-07

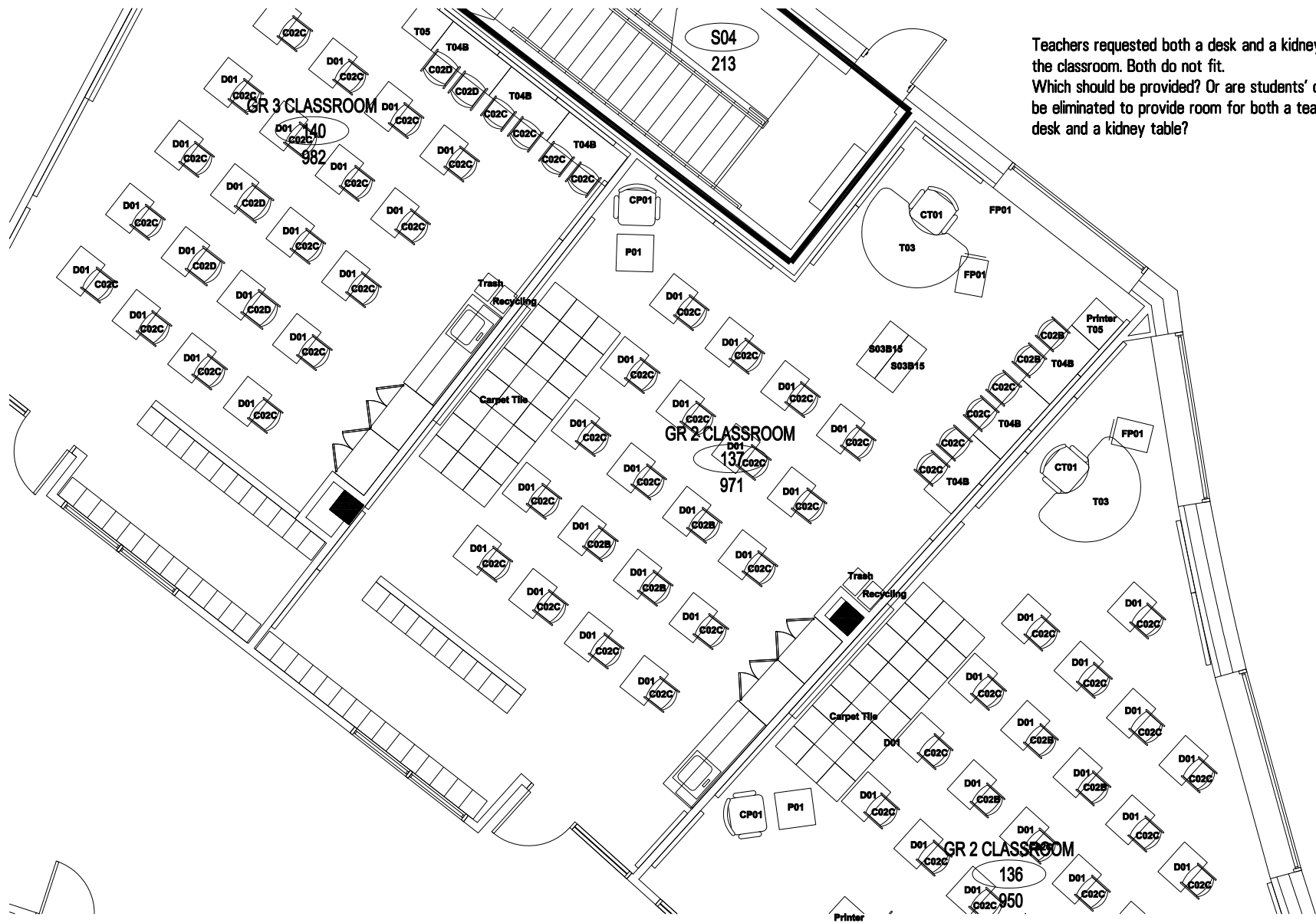
FLOOR	AREA	ROOM NAME	ROOM NUMBER	ROOM USE	CONCEPT/S YMBOL	ITEM NAME	CODE	ITEM DESCRIPTION	ITEM QUANTITY	STANDARD OR NONSTANDARD	NOTES
1	B	Office	135L	Office	NA	adult task chair	CT01		1		
1	B	Office	135L	Office	NA	guest chair	CG01		2		
1	B	Office	135M	Office	NA	guest chair	CG01		2		
1	B	Office	135M	Office	NA	storage unit with lockable doors	SU01		1		
1	B	Office	135M	Office	NA	lateral file	LT05B		1		
1	B	Office	135M	Office	NA	workwall with oval table	OFF135M		1		
1	B	Office	135M	Office	NA	adult task chair	CT01		1		

Indian Community School

FFE Inventory

16-Feb-07

FLOOR	AREA	ROOM NAME	ROOM NUMBER	ROOM USE	CONCEPT/S YMBOL	ITEM NAME	CODE	ITEM DESCRIPTION	ITEM QUANTITY	STANDARD OR NONSTANDARD	NOTES
1	B	Grade 2 Classroom	136	Classroom	Sumac	kidney table w/ casters	T03		1		
1	B	Grade 2 Classroom	136	Classroom	Sumac	student desk	D01	w/ storage	20		
1	B	Grade 2 Classroom	136	Classroom	Sumac	computer tables	T04	adjustable height	3		
1	B	Grade 2 Classroom	136	Classroom	Sumac	printer table	T05		1		
1	B	Grade 2 Classroom	136	Classroom	Sumac	student chair	C02B		5		
1	B	Grade 2 Classroom	136	Classroom	Sumac	student chair	C02C		21		
1	B	Grade 2 Classroom	136	Classroom	Sumac	SMART Board podium	P01		1		
1	B	Grade 2 Classroom	136	Classroom	Sumac	podium stool	CP01		1		
1	B	Grade 2 Classroom	136	Classroom	Sumac	adult task chair	CT01		1		
1	B	Grade 2 Classroom	136	Classroom	Sumac	bathroom cabinet	S06		1		
1	B	Grade 2 Classroom	136	Classroom	Sumac	shelves for books and bins	S03B15	with casters	2		
1	B	Grade 2 Classroom	136	Classroom	Sumac	trash receptacle	Trash		1		
1	B	Grade 2 Classroom	136	Classroom	Sumac	recycling receptacle	Recycling		1		
1	B	Grade 2 Classroom	136	Classroom	Sumac	FLOR carpet tiles			24		



Teachers requested both a desk and a kidney table in the classroom. Both do not fit. Which should be provided? Or are students' desks to be eliminated to provide room for both a teacher's desk and a kidney table?

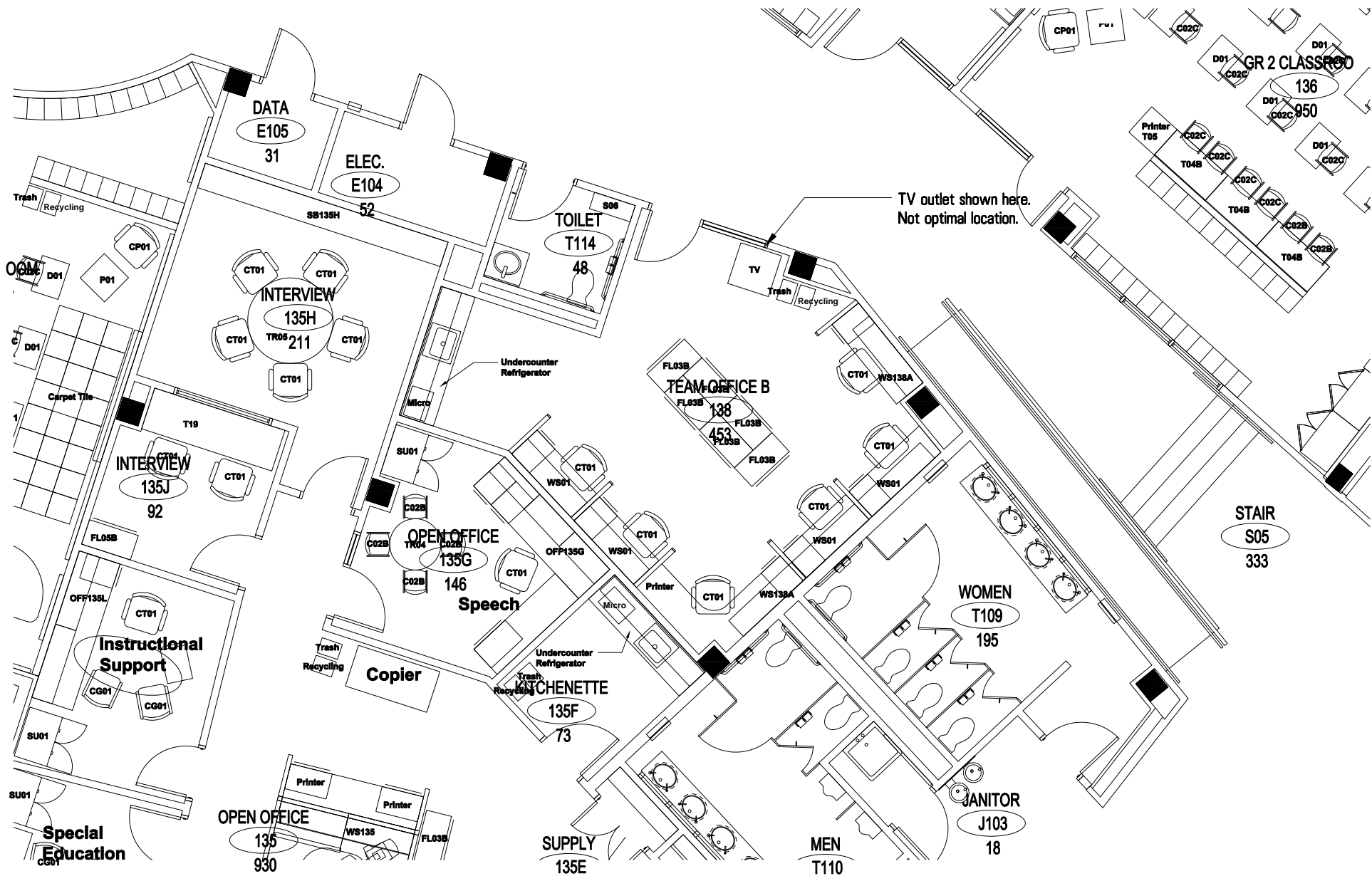


Indian Community School

FFE Inventory

16-Feb-07

FLOOR	AREA	ROOM NAME	ROOM NUMBER	ROOM USE	CONCEPT/S YMBOL	ITEM NAME	CODE	ITEM DESCRIPTION	ITEM QUANTITY	STANDARD OR NONSTANDARD	NOTES
1	B	Grade 2 Classroom	137	Classroom	Sweetgrass	kidney table w/ casters	T03		1		
1	B	Grade 2 Classroom	137	Classroom	Sweetgrass	mobile pedestal file	FP01		1		
1	B	Grade 2 Classroom	137	Classroom	Sweetgrass	student desk	D01		20		
1	B	Grade 2 Classroom	137	Classroom	Sweetgrass	computer tables	T04	adjustable height	3		
1	B	Grade 2 Classroom	137	Classroom	Sweetgrass	printer table	T05		1		
1	B	Grade 2 Classroom	137	Classroom	Sweetgrass	student chair	C02B		5		
1	B	Grade 2 Classroom	137	Classroom	Sweetgrass	student chair	C02C		21		
1	B	Grade 2 Classroom	137	Classroom	Sweetgrass	SMART Board podium	P01		1		
1	B	Grade 2 Classroom	137	Classroom	Sweetgrass	podium stool	CP01		1		
1	B	Grade 2 Classroom	137	Classroom	Sweetgrass	adult task chair	CT01		1		
1	B	Grade 2 Classroom	137	Classroom	Sweetgrass	bathroom cabinet	S06		1		
1	B	Grade 2 Classroom	137	Classroom	Sweetgrass	shelves for books and bins	S03B15	with casters	2		
1	B	Grade 2 Classroom	137	Classroom	Sweetgrass	trash receptacle	Trash		1		
1	B	Grade 2 Classroom	137	Classroom	Sweetgrass	recycling receptacle	Recycling		1		
1	B	Grade 2 Classroom	137	Classroom	Sweetgrass	FLOR carpet tiles			24		



Indian Community School

Room 138 – Team Office B

Floor 1, Area B

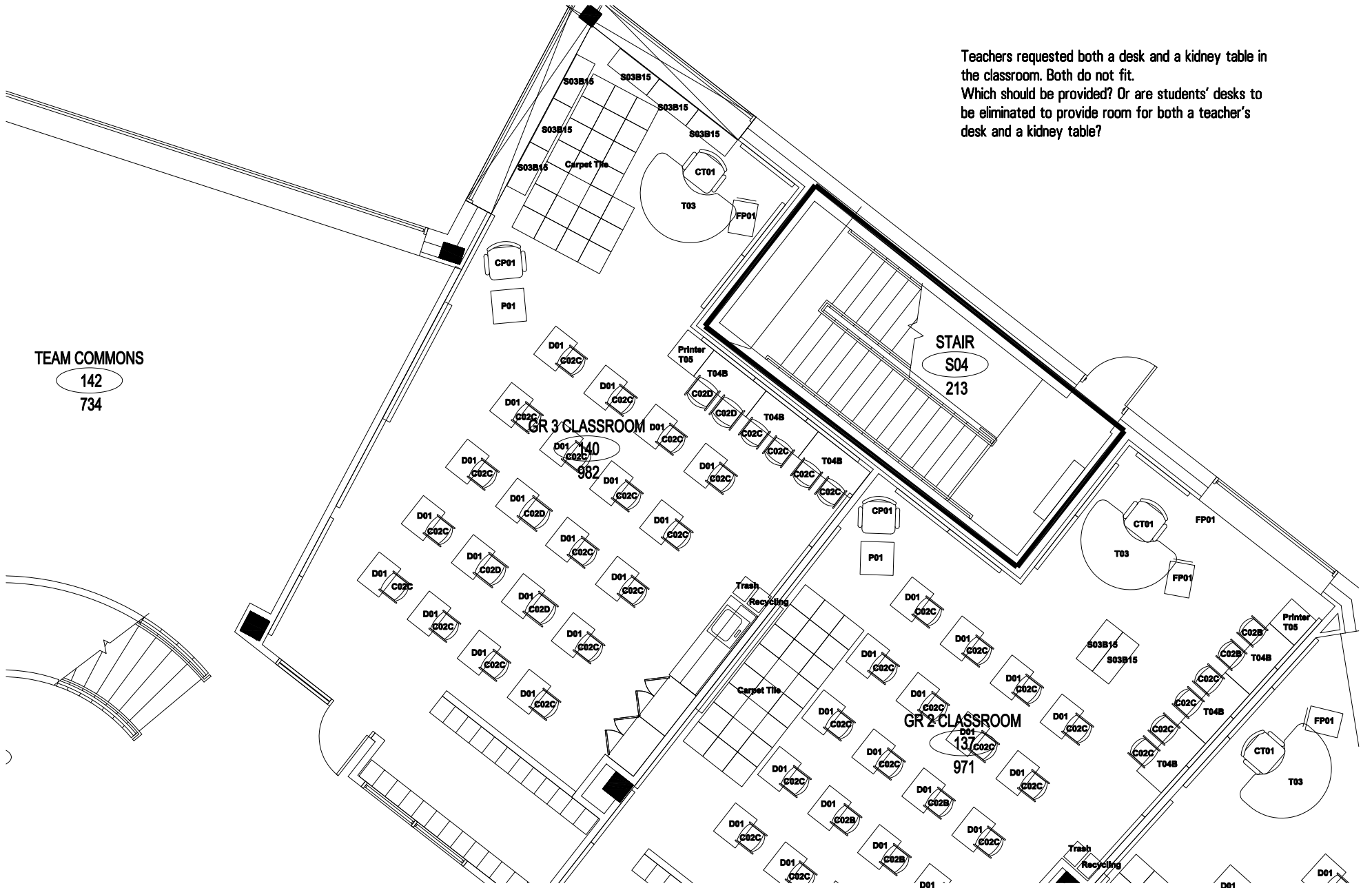
Indian Community School

FFE Inventory

16-Feb-07

FLOOR	AREA	ROOM NAME	ROOM NUMBER	ROOM USE	CONCEPT/S YMBOL	ITEM NAME	CODE	ITEM DESCRIPTION	ITEM QUANTITY	STANDARD OR NONSTANDARD	NOTES
1	B	Team Office B	138	Office	NA	workstation	WS01		6		
1	B	Team Office B	138	Office	NA	adult task chair	CT01		6		
1	B	Team Office B	138	Office	NA	36" wide lateral file	FL05B		4		
1	B	Team Office B	138	Office	NA	undercounter refrigerator			1		
1	B	Team Office B	138	Office	NA	microwave			1		
1	B	Team Office B	138	Office	NA	half round table, 36" dia.	T06		1		
1	B	Team Office B	138	Office	NA	trash receptacle	Trash		1		
1	B	Team Office B	138	Office	NA	recycling receptacle	Recycling		1		
1	B	Team Office B	138	Office	NA	middle school student/adult chair	C02E		3		

Teachers requested both a desk and a kidney table in the classroom. Both do not fit. Which should be provided? Or are students' desks to be eliminated to provide room for both a teacher's desk and a kidney table?



TEAM COMMONS

142
734

GR 3 CLASSROOM

140
982

STAIR
S04
213

GR 2 CLASSROOM

13
971

Indian Community School

Room 140 – 3rd Grade Classroom

Floor 1, Area B

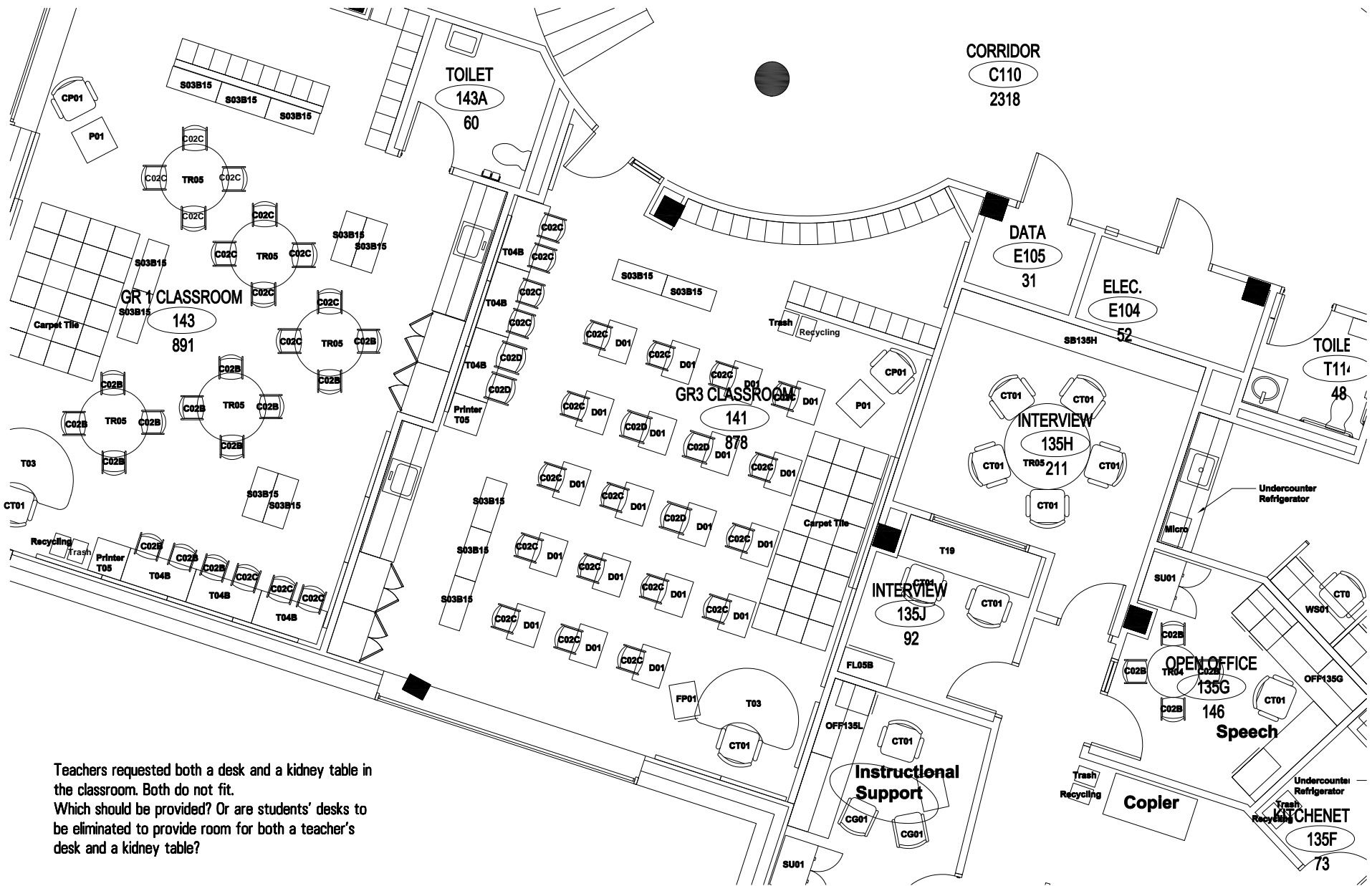


Indian Community School

FFE Inventory

16-Feb-07

FLOOR	AREA	ROOM NAME	ROOM NUMBER	ROOM USE	CONCEPT/S YMBOL	ITEM NAME	CODE	ITEM DESCRIPTION	ITEM QUANTITY	STANDARD OR NONSTANDARD	NOTES
1	B	Grade 3 Classroom	140	Classroom	Sage	kidney table w/ casters	T03		1		
1	B	Grade 3 Classroom	140	Classroom	Sage	mobile pedestal file	FP01		1		
1	B	Grade 3 Classroom	140	Classroom	Sage	open shelving with baskets/bins for 20	S03B15		6		
1	B	Grade 3 Classroom	140	Classroom	Sage	student desk	D01		20		
1	B	Grade 3 Classroom	140	Classroom	Sage	student chair	C02C		21		
1	B	Grade 3 Classroom	140	Classroom	Sage	student chair	C02D		5		
1	B	Grade 3 Classroom	140	Classroom	Sage	computer tables	T04	adjustable height	3		
1	B	Grade 3 Classroom	140	Classroom	Sage	printer table	T05		1		
1	B	Grade 3 Classroom	140	Classroom	Sage	mobile pedestal file	FP01		1		
1	B	Grade 3 Classroom	140	Classroom	Sage	adult task chair	CT01		1		
1	B	Grade 3 Classroom	140	Classroom	Sage	SMART Board podium	P01		1		
1	B	Grade 3 Classroom	140	Classroom	Sage	podium stool	CP01		1		
1	B	Grade 3 Classroom	140	Classroom	Sage	trash receptacle	Trash		1		
1	B	Grade 3 Classroom	140	Classroom	Sage	recycling receptacle	Recycling		1		
1	B	Grade 3 Classroom	140	Classroom	Sage	FLOR carpet tiles			24		



Teachers requested both a desk and a kidney table in the classroom. Both do not fit. Which should be provided? Or are students' desks to be eliminated to provide room for both a teacher's desk and a kidney table?

Indian Community School

FFE Inventory

16-Feb-07

FLOOR	AREA	ROOM NAME	ROOM NUMBER	ROOM USE	CONCEPT/S YMBOL	ITEM NAME	CODE	ITEM DESCRIPTION	ITEM QUANTITY	STANDARD OR NONSTANDARD	NOTES
1	B	Grade 3 Classroom	141	Classroom	Blueberry	kidney table w/ casters	T03		1		
1	B	Grade 3 Classroom	141	Classroom	Blueberry	student desk	D01		20		
1	B	Grade 3 Classroom	141	Classroom	Blueberry	student chairs	C02C		21		
1	B	Grade 3 Classroom	141	Classroom	Blueberry	student chairs	C02D		5		
1	B	Grade 3 Classroom	141	Classroom	Blueberry	computer tables	T04	adjustable height	3		
1	B	Grade 3 Classroom	141	Classroom	Blueberry	printer table	T05		1		
1	B	Grade 3 Classroom	141	Classroom	Blueberry	mobile pedestal file	FP01		1		
1	B	Grade 3 Classroom	141	Classroom	Blueberry	adult task chair	CT01		1		
1	B	Grade 3 Classroom	141	Classroom	Blueberry	SMART Board podium	P01		1		
1	B	Grade 3 Classroom	141	Classroom	Blueberry	podium stool	CP01		1		
1	B	Grade 3 Classroom	141	Classroom	Blueberry	4-high shelves for books and bins	S03B15		5		
1	B	Grade 3 Classroom	141	Classroom	Blueberry	trash receptacle	Trash		1		
1	B	Grade 3 Classroom	141	Classroom	Blueberry	recycling receptacle	Recycling		1		
1	B	Grade 3 Classroom	141	Classroom	Blueberry	FLOR carpet tiles			24		

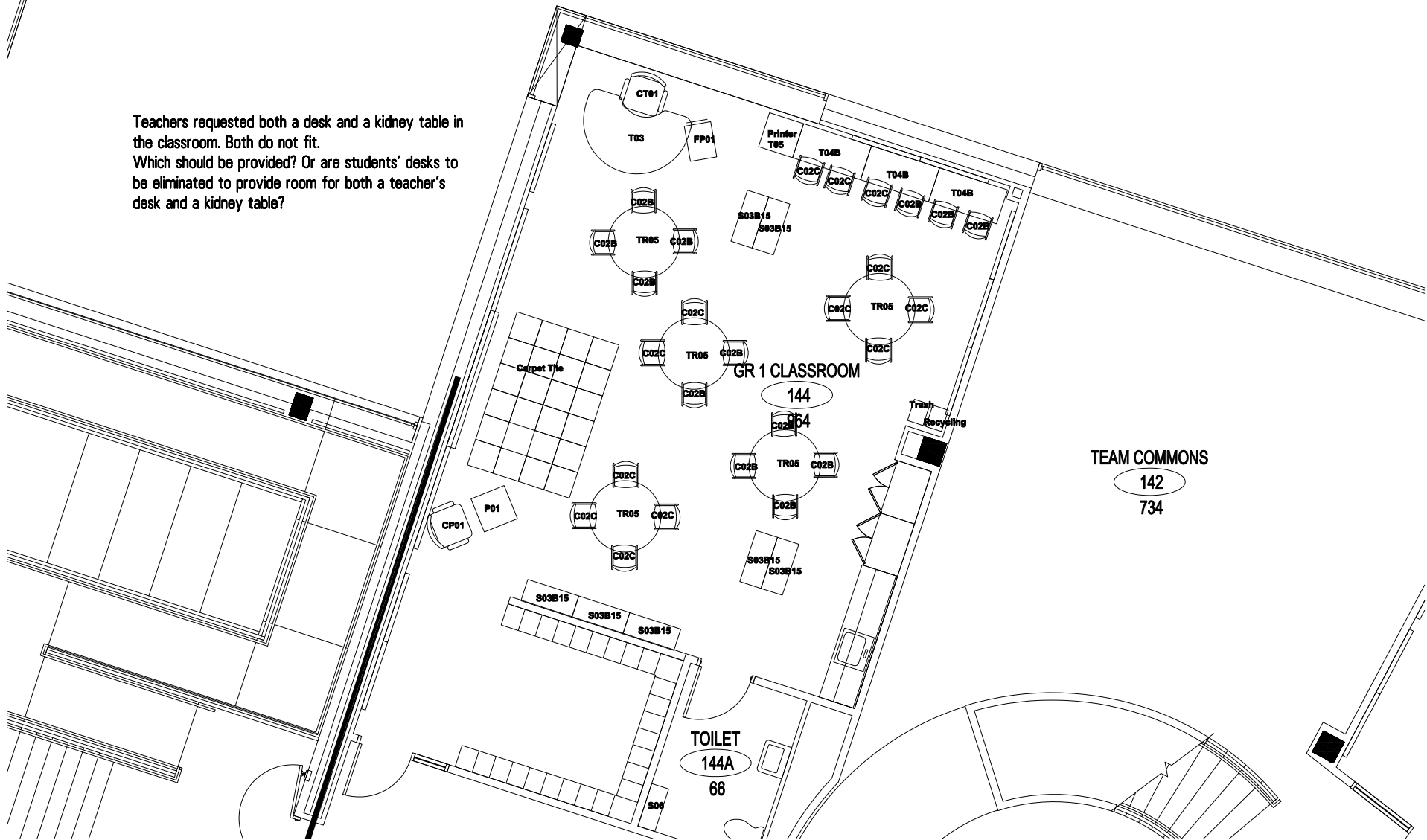
Indian Community School

FFE Inventory

16-Feb-07

FLOOR	AREA	ROOM NAME	ROOM NUMBER	ROOM USE	CONCEPT/S YMBOL	ITEM NAME	CODE	ITEM DESCRIPTION	ITEM QUANTITY	STANDARD OR NONSTANDARD	NOTES
1	B	Grade 1 Classroom	143	Classroom	Strawberry	kidney table w/ casters	T03		1		
1	B	Grade 1 Classroom	143	Classroom	Strawberry	computer tables	T04	adjustable height	3		
1	B	Grade 1 Classroom	143	Classroom	Strawberry	printer table	T05		1		
1	B	Grade 1 Classroom	143	Classroom	Strawberry	student chair	C02B		13		
1	B	Grade 1 Classroom	143	Classroom	Strawberry	student chair	C02C		13		
1	B	Grade 1 Classroom	143	Classroom	Strawberry	mobile pedestal file	FP01		1		
1	B	Grade 1 Classroom	143	Classroom	Strawberry	SMART Board podium	P01		1		
1	B	Grade 1 Classroom	143	Classroom	Strawberry	48" round tables	TR04C		5		
1	B	Grade 1 Classroom	143	Classroom	Strawberry	adult task chair	CT01		1		
1	B	Grade 1 Classroom	143	Classroom	Strawberry	bathroom cabinet	S06		1		
1	B	Grade 1 Classroom	143	Classroom	Strawberry	shelves for books and bins	S03B15	with casters	7		
1	B	Grade 1 Classroom	143	Classroom	Strawberry	trash receptacle	Trash		1		
1	B	Grade 1 Classroom	143	Classroom	Strawberry	recycling receptacle	Recycling		1		
1	B	Grade 1 Classroom	143	Classroom	Strawberry	FLOR carpet tiles			24		

Teachers requested both a desk and a kidney table in the classroom. Both do not fit.
Which should be provided? Or are students' desks to be eliminated to provide room for both a teacher's desk and a kidney table?



Indian Community School

FFE Inventory

16-Feb-07

FLOOR	AREA	ROOM NAME	ROOM NUMBER	ROOM USE	CONCEPT/S YMBOL	ITEM NAME	CODE	ITEM DESCRIPTION	ITEM QUANTITY	STANDARD OR NONSTANDARD	NOTES
1	B	Grade 1 Classroom	144	Classroom	Tobacco	kidney table w/ casters	T03		1		
1	B	Grade 1 Classroom	144	Classroom	Tobacco	computer tables	T04	adjustable height	3		
1	B	Grade 1 Classroom	144	Classroom	Tobacco	student chair	C02B		13		
1	B	Grade 1 Classroom	144	Classroom	Tobacco	student chair	C02C		13		
1	B	Grade 1 Classroom	144	Classroom	Tobacco	mobile pedestal file	FP01		1		
1	B	Grade 1 Classroom	144	Classroom	Tobacco	SMART Board podium	P01		1		
1	B	Grade 1 Classroom	144	Classroom	Tobacco	podium stool	CP01		1		
1	B	Grade 1 Classroom	144	Classroom	Tobacco	printer table	T05		1		
1	B	Grade 1 Classroom	144	Classroom	Tobacco	48" round tables	TR04C		5		
1	B	Grade 1 Classroom	144	Classroom	Tobacco	adult task chair	CT01		1		
1	B	Grade 1 Classroom	144	Classroom	Tobacco	bathroom cabinet	S06		1		
1	B	Grade 1 Classroom	144	Classroom	Tobacco	shelves for books and bins	S03B15	with casters	7		
1	B	Grade 1 Classroom	144	Classroom	Tobacco	trash receptacle	Trash		1		
1	B	Grade 1 Classroom	144	Classroom	Tobacco	recycling receptacle	Recycling		1		
1	B	Grade 1 Classroom	144	Classroom	Tobacco	FLOR carpet tiles			24		